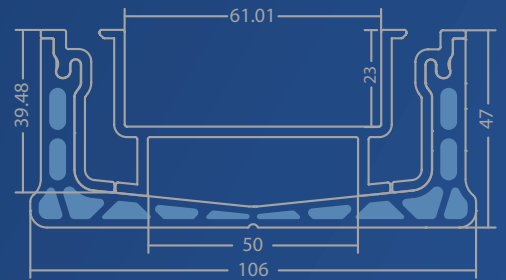


ULTRA EDGE TILE INSERT

Available in 2000mm lengths

The Model ULTRA EDGE TILE INSERT is ideal for where shallow screeds are required to ensure the concrete integrity is not compromised. Available in 2000mm lengths with a spigot that is completely flexible as to where it is to be fitted.

This product with its high water flow of 260 L/M allows for it to be used in balcony, pool and landscaping applications.

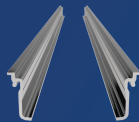


Water Flow 260 L/M

Parts & Fittings



1 End Cap with Alloy Cap



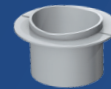
2 Alloy Side Extrusion



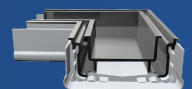
3 Alloy Tile Insert Tray



4 Joiner



5 Spigot



6 Right Angle Corner

WIDTH			HEIGHT
I.D.	O.D.	OVERALL O.D.	
61.01mm	73.01mm	106mm	47mm

